

# LARP Apartment Details

22 Avenue de Vessy, Ferney-Voltaire, France

## Keys

Arrangements should be made for obtaining the key(s) before going to CERN. There are two keys for each lab, and the local contacts are:

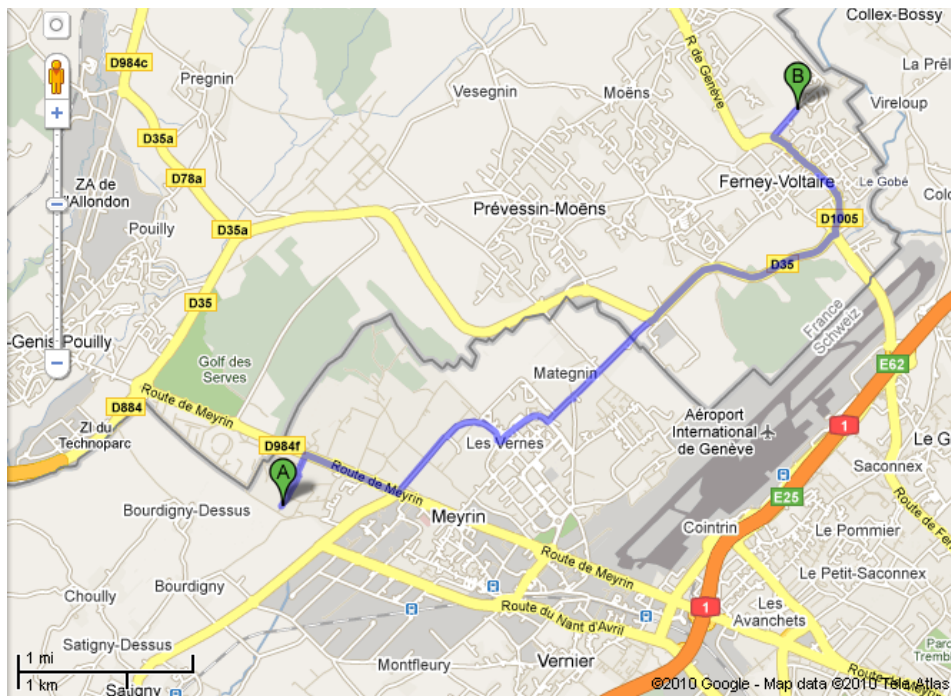
- FNAL – Eric Prebys ([prebys@fnal.gov](mailto:prebys@fnal.gov))
- BNL – Angelika Drees ([drees@bnl.gov](mailto:drees@bnl.gov))
- LBNL – GianLuca Sabbi ([GLSabbi@lbl.gov](mailto:GLSabbi@lbl.gov))
- SLAC – Tom Markiewicz ([twmark@slac.stanford.edu](mailto:twmark@slac.stanford.edu))

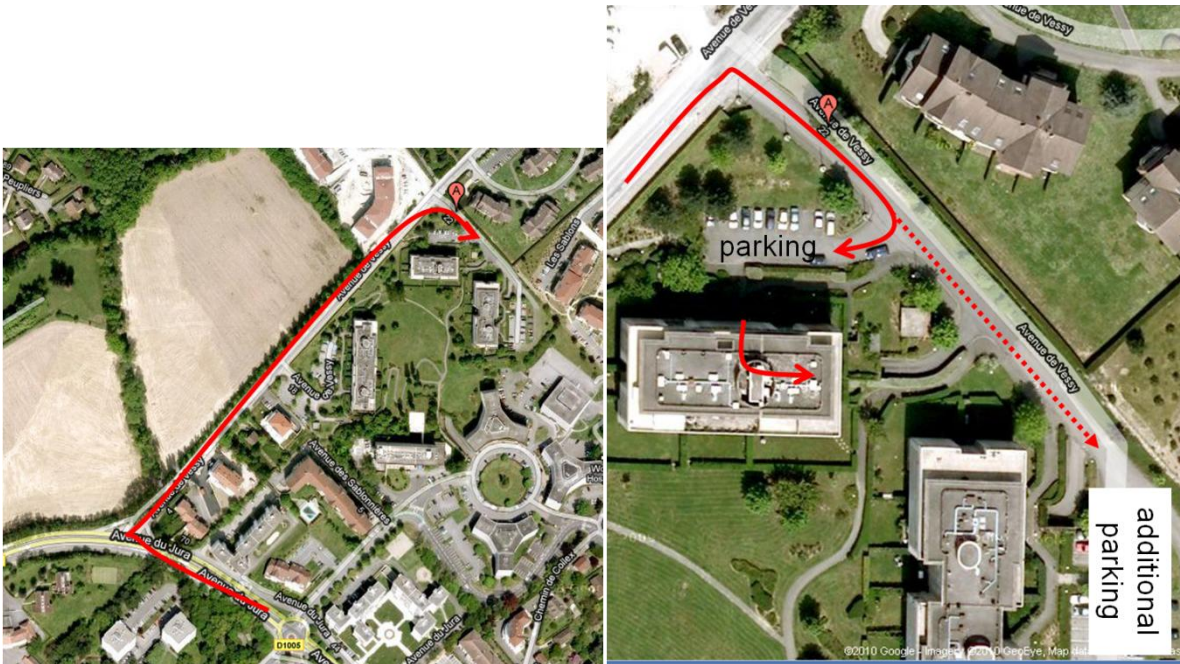
If time and schedules permit, you could also arrange to get a key from Ryoichi Miyamoto at CERN ([miyamoto@bnl.gov](mailto:miyamoto@bnl.gov)).

These keys are extremely expensive to copy. Please do not lose them!! Unless other arrangements are made, please promptly return the keys to the person who gave them to you upon leaving.

## Getting There

Below is a map showing the location of the apartment in relation to CERN and the Geneva Airport, followed by details to help find it.





### Detailed Instructions

- Get to “the big traffic circle in Femey” by your favorite route. Exit Avenue du Jura (direction Gex)
- Drive through Ferney Voltaire, going straight through any roundabouts and traffic lights.
- After 2nd traffic light, you will go through a roundabout with a right exit marked “Centre d’Affaires International”. Skip that exit and go straight through the roundabout.
- The next (badly marked) right will be Ave de Vessy.
- On Ave de Vessy, you will pass a sign on the right that says “Crete de la Nieve”. Continue going straight.
- Take the next right, and then immediately right again into the parking lot, as shown. There is a big “22” on the front of the building.
- If that lot is full, there are two additional lots in back.
- Go through front door and lobby. You will need you key to open the inner door. Stay on the first floor and turn left down the corridor.
- The apartment is the last one on the right, across from the concierge. Note: *it is not marked in any way.*

## Rules

We currently do not have a cleaning service, so guests are responsible for keeping their rooms clean, and are expected to do their share to keep the common areas clean as well.

There is a washer in the back bathroom of the apartment, and a drying rack which is usually in the family room. However, be aware that the washer is extremely slow, taking *roughly 3 hours* for a full cycle. In most cases, you will not be able to wash linens and towels on the day you leave, so *please bring your own*.

Guests are permitted, but please be respectful of the other residents of the apartment. Sizeable events, like dinners, should be coordinated with other residents.